



VISTAL

Victoria Swarovski

This brochure is the property of LEO (the "Developer") and its contents may not be reproduced in any manner without the prior written permission of the Company. Please note that unauthorized use, reproduction, display or dissemination of this brochure is strictly prohibited.

Contact Us

Website: www.leodevelopments.com
Email: Info@leodevelopments.com

VISTAL



VISTAL

Victoria Swarovski
Luxury Branded Residences





LEO

About The Developer

Rooted in excellence and inspired by European craftsmanship, LEO Developments is a prestigious real estate developer of German/European origin, renowned for delivering distinctive, high-end developments across the European region. With an unwavering commitment to quality, precision, and timeless design, and operating under German quality control standards, the company has built a legacy defined by luxury, innovation, and integrity.

Every project is a reflection of sophistication, meticulously planned, elegantly executed, and crafted to offer a one-of-a-kind living experience. From concept to completion, LEO Developments upholds the highest standards of architectural excellence and attention to detail, ensuring each development not only meets but exceeds expectations.

Guided by a passion for perfection and a belief that true luxury lies in the details, LEO Developments continues to set new benchmarks in the world of upscale residential living, creating spaces that inspire, endure, and elevate everyday life.





Victoria Swarovski

Victoria Swarovski is an internationally recognized public figure celebrated for her multifaceted career as a singer, television host, and fashion icon. As a member of the prestigious Swarovski family, she has seamlessly blended heritage and modernity, embodying the essence of contemporary luxury. Her presence in the entertainment and fashion industries has positioned her as a global ambassador of style and sophistication, while her entrepreneurial drive continues to inspire a new generation of women in business.

Coming from a crystal dynasty herself, Victoria had substantial influence over the success of LUXOR CRYSTAL as Procurist, further strengthening her position as an independent businesswoman within Europe's luxury sector.



AL MOUJ MUSCAT MASTERPLAN



AZURA BEACH

ISLAND

VISTAL

INTERNATIONAL HOTEL

JINAN ISLAND

LINEAR PARK

ZUNAIRAH

REEHAN RESIDENCES

ST. REGIS RESORT

AL-MOUJ GOLF

DISTRICT MAP

1. VISTAL

2. INTERNATIONAL HOTEL

3. AL-MOUJ BEACH

4. AL-MOUJ MARINA

5. THE GARDEN

6. KEMPINSKI HOTEL

7. MYSK HOTEL



SITE MAP



VISTAL



*Select Your Perfect
Ocean-Front Sky-Apartment In*

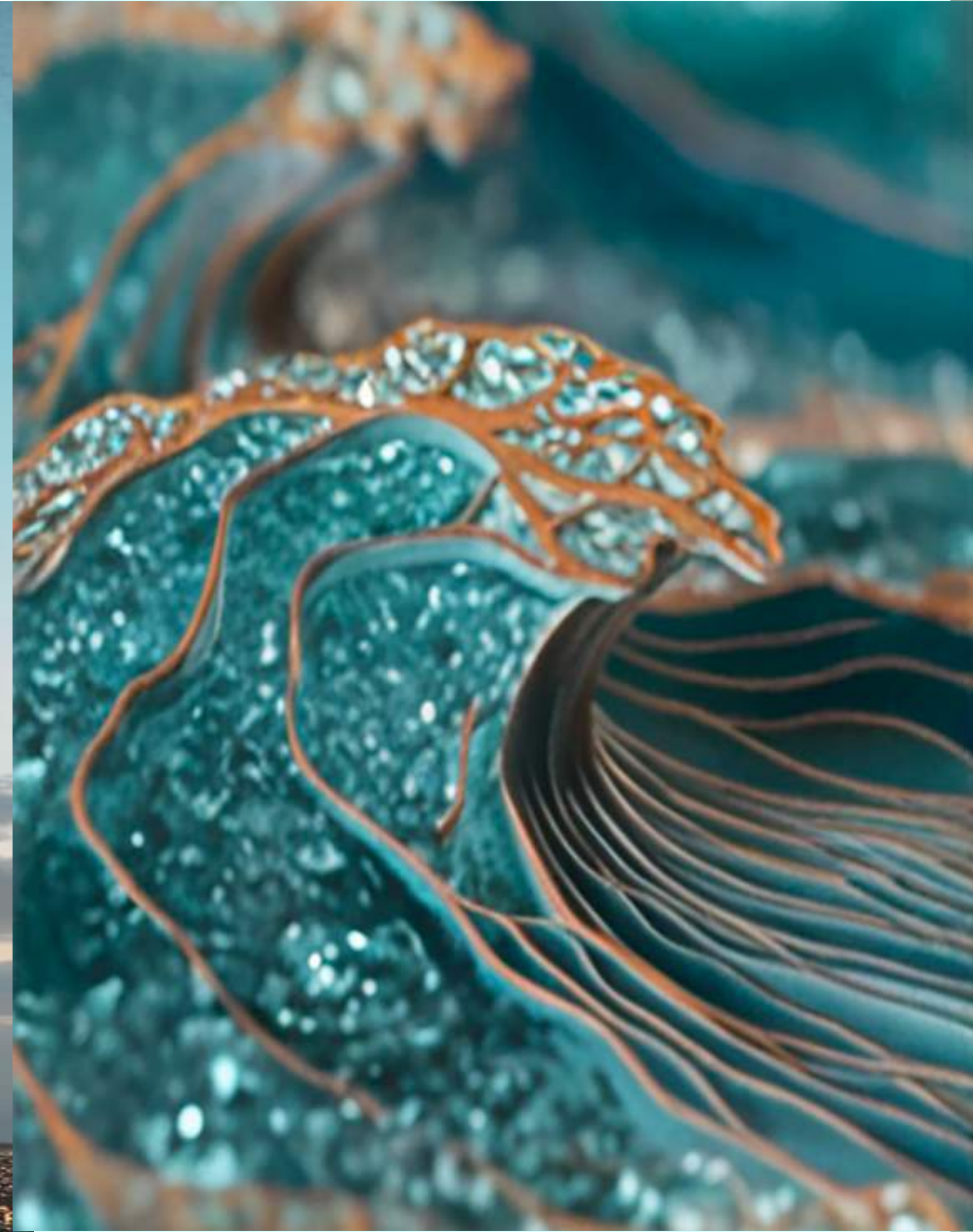
VISTAL



THE FIRST OF ITS KIND
IN GCC & OMAN
BY VICTORIA SWAROVSKI



Disclaimer - Beach development is subject to final design and authority approvals.



Luxury Perfected
Through Design

Architecture



That Flows

The Grand
Entrance



Valet Services
Curated Just
For You



The above is subject to disclaimer contained in this brochure.

Where Luxury is
Tailored To You

*Step In,
Feel The Luxury*



The above is subject to disclaimer contained in this brochure.

*A Landmark of Sophisticated Exclusivity.
Crafted For Those Who Live Beyond The Ordinary.*



The above is subject to disclaimer contained in this brochure.



*Where Luxury
Meets The Sea*





*Your Seaside
Sanctuary Awaits*



The above is subject to disclaimer contained in this brochure.

Your Family
Haven



Design That Flows
Like The Waves



The above is subject to disclaimer contained in this brochure.

*Fluid Lines.
Endless Horizons.*



The above is subject to disclaimer contained in this brochure.

*A Sanctuary of Grandeur,
Tailored to You.*



The above is subject to disclaimer contained in this brochure.



The above is subject to disclaimer contained in this brochure.



The Ultimate Beach-front
Living Experience

The above is subject to disclaimer contained in this brochure.

Concept
& Mood

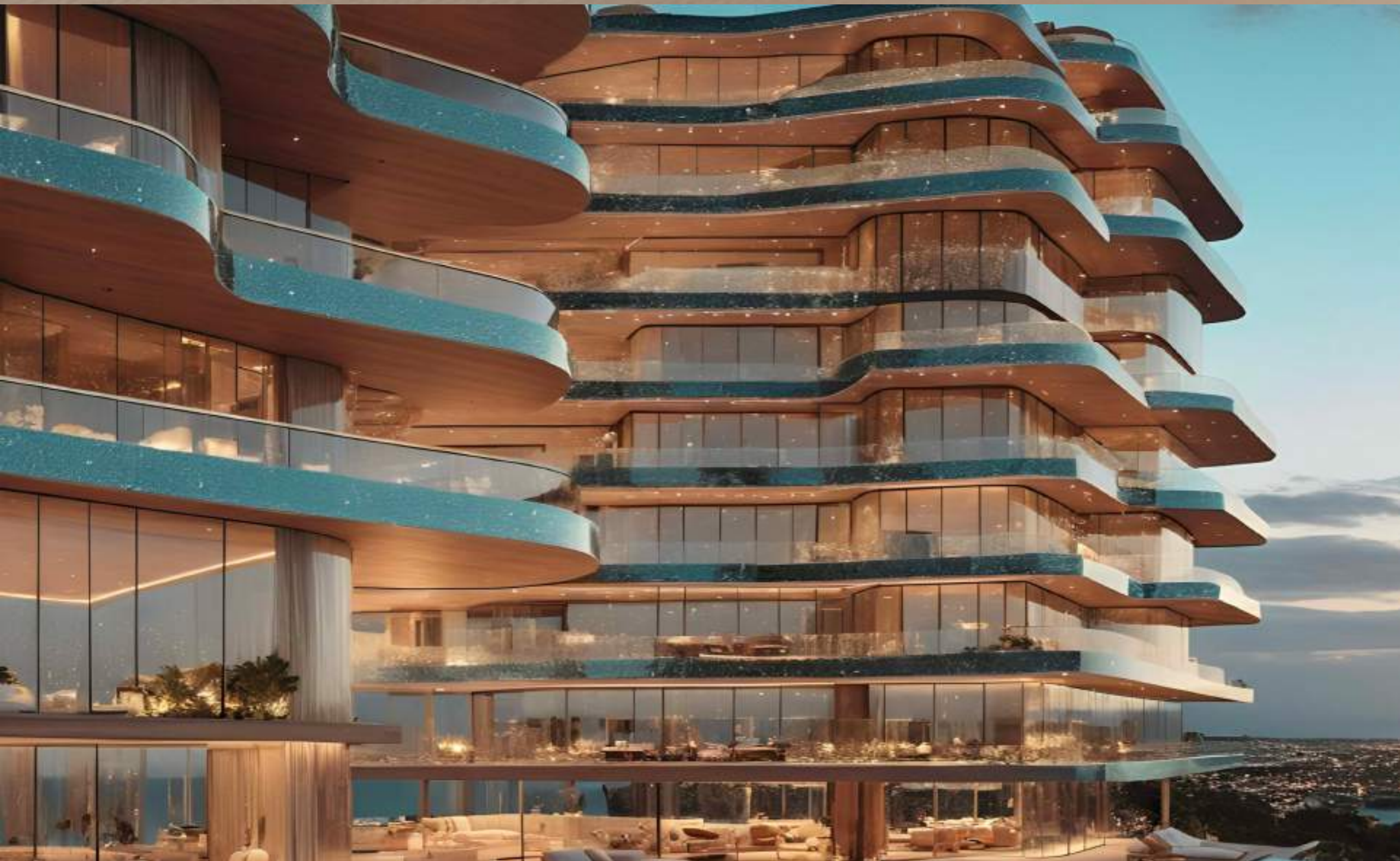
Inspiration &
Atmosphere



The above is subject to disclaimer contained in this brochure.



The above is subject to disclaimer contained in this brochure.

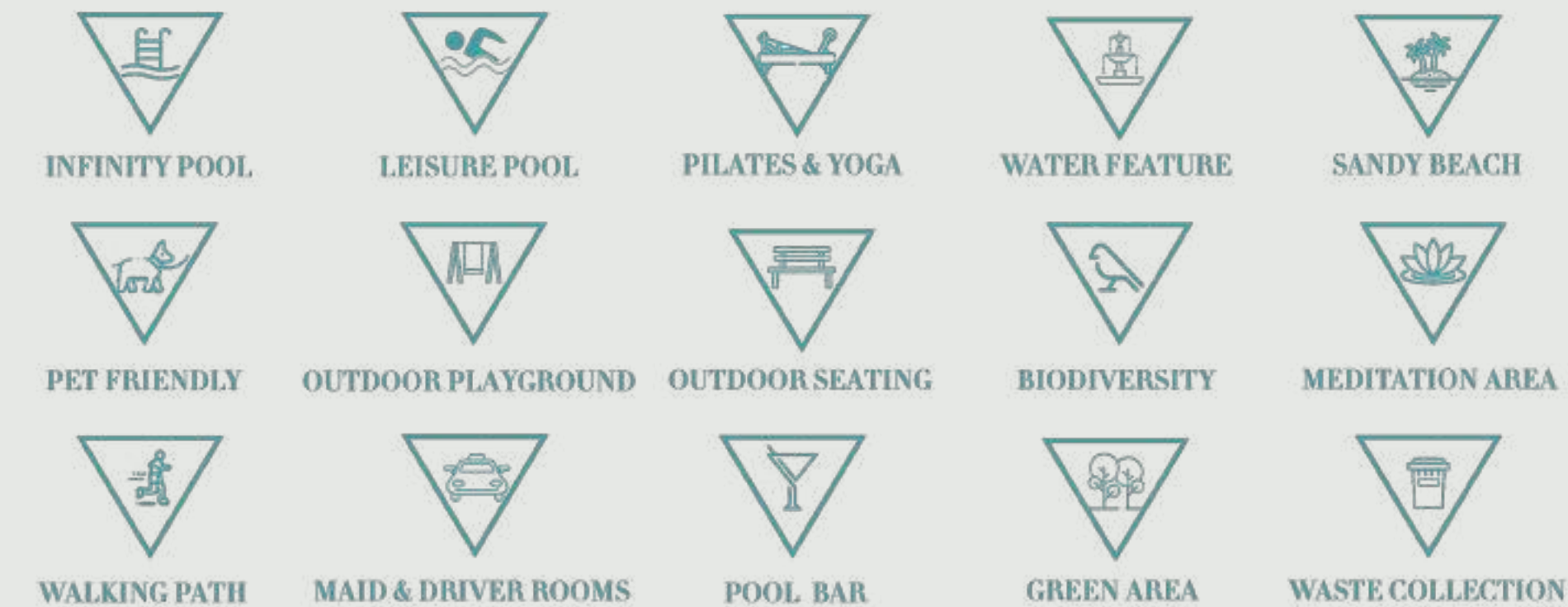


Exclusive Amenities

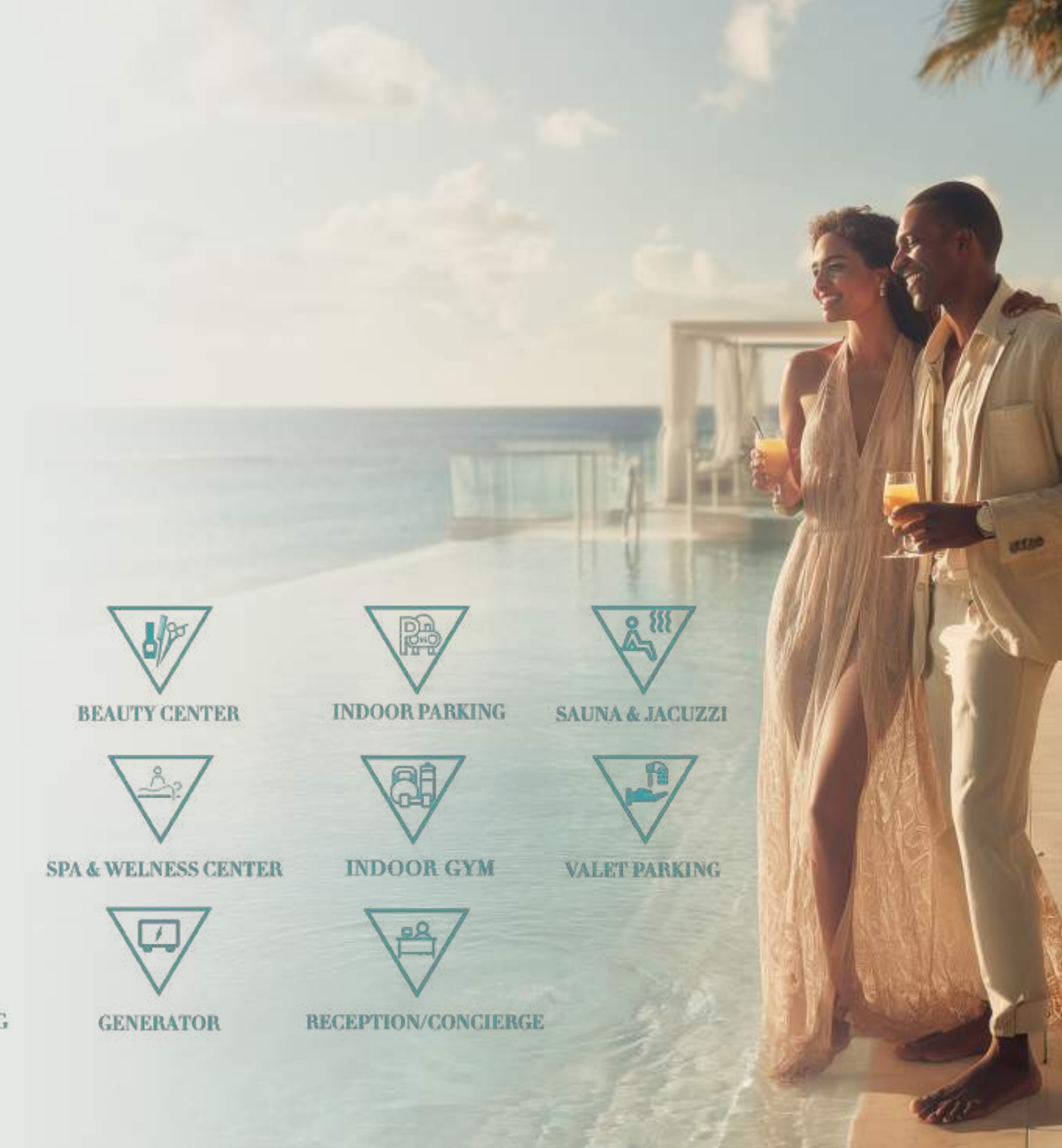
The above is subject to disclaimer contained in this brochure.

50+ *Amenities*

Ground Level (Outdoor)



Ground Level (Indoor)



50+ *Amenities*

Apartments



SAFE BOX



AI CCTV MONITORING



LAUNDRY SERVICE



SOLAR ENERGY



ACCESS CONTROL



PANORAMIC VIEW



EXCLUSIVE BOOKING APP



MULTI-PURPOSE HALL



24h SERVICE



HOUSE KEEPING



SMART SYSTEM & BMS



PRIVATE POOL



AIR QUALITY MANAGMENT



WATER PURIFICATION
& UV STERILISATION



CUSTOM INTERIOR



SMART GLASS TECHNOLOG



Amenities Plans



The above is subject to disclaimer contained in this brochure.



2ND FLOOR AMENITIES

- 1 ♥ FITNESS STUDIO
- 2 ♥ OUTDOOR FITNESS AREA
- 3 ♥ POOL SUN LOUNGERS
- 4 ♥ ADULT POOL
- 5 ♥ KIDS SPLASH PAD
- 6 ♥ INFINITY POOL
- 7 ♥ LIFT LOBBY
- 8 ♥ POOL ISLAND

The above is subject to disclaimer contained in this brochure.



PENTHOUSE AMENITIES

- 1 ♥ WELLNESS CENTER
- 2 ♥ ENTRANCE
- 3 ♥ MALE SPA
- 4 ♥ FEMALE SPA
- 5 ♥ PLUNGE POOL

The above is subject to disclaimer contained in this brochure.

VIP Lounge

Your Private World of Comfort



The above is subject to disclaimer contained in this brochure



The above is subject to disclaimer contained in this brochure.

Luxury Redefined For Businesses



Disclaimer. All images, plans and renders are for illustration only and may change without notice; the developer reserves the right to amend designs, finishes or layouts as required by authorities or project needs.



Luxury Flows



In Every Hallway



The above is subject to disclaimer contained in this brochure.

Kids Play Area



The above is subject to disclaimer contained in this brochure.



*Seamless
Access
Effortless
Living*



The above is subject to disclaimer contained in this brochure.

The above is subject to disclaimer contained in this brochure.



The above is subject to disclaimer contained in this brochure.

Luxury
That Begins...



The above is subject to disclaimer contained in this brochure.

The Moment
You Arrive



Outdoor Spaces
Unwind & Connect

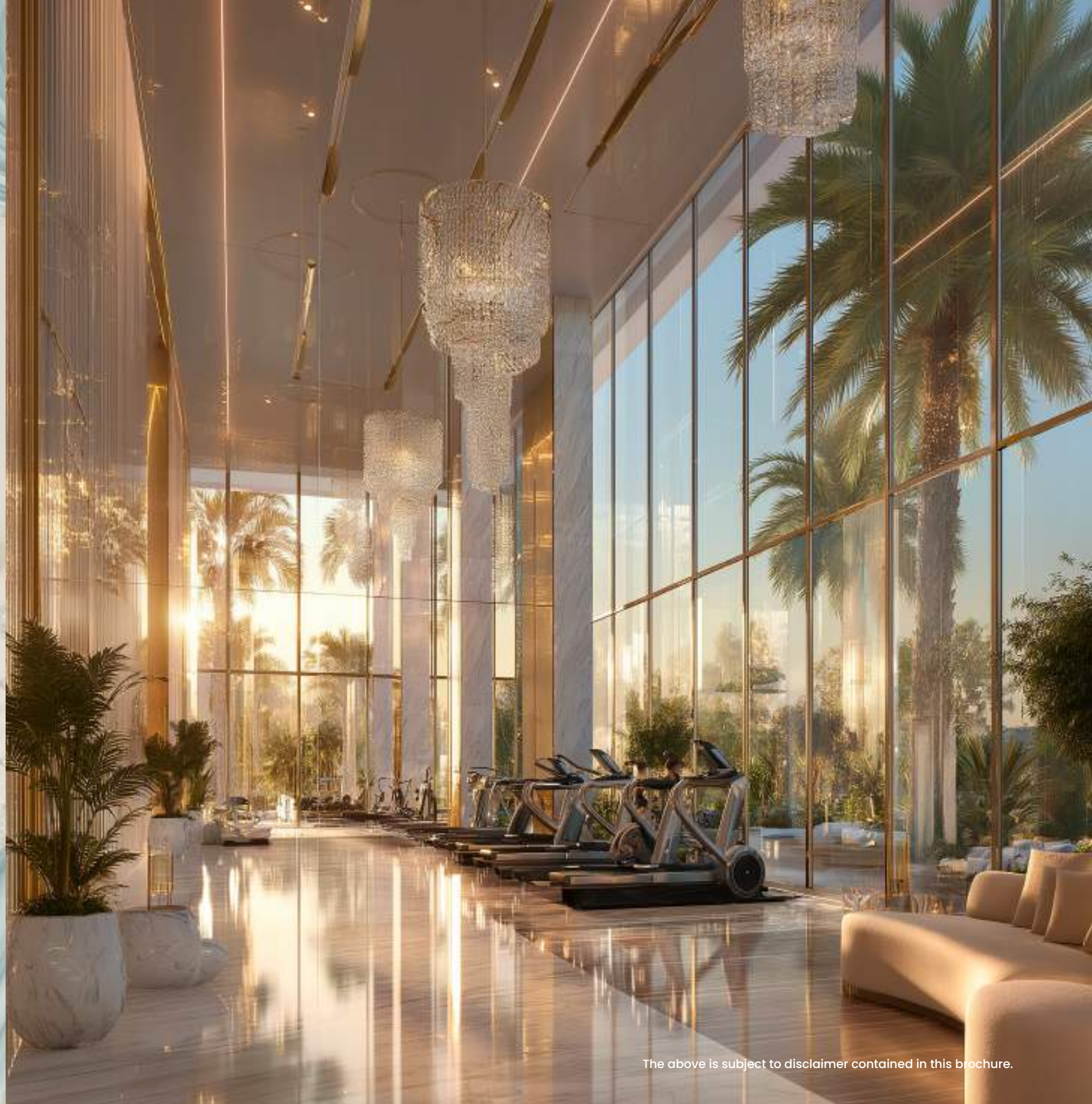


The above is subject to disclaimer contained in this brochure.

Luxury Fitness
Redefined



The above is subject to disclaimer contained in this brochure.



The above is subject to disclaimer contained in this brochure.

The Wellness Center



The above is subject to disclaimer contained in this brochure.



The above is subject to disclaimer contained in this brochure.



The above is subject to disclaimer contained in this brochure.



The above is subject to disclaimer contained in this brochure.



The above is subject to disclaimer contained in this brochure.



*Where
Relaxation
Becomes A
Lifestyle*

*Art
Meets
Beauty*



The above is subject to disclaimer contained in this brochure.



The above is subject to disclaimer contained in this brochure.



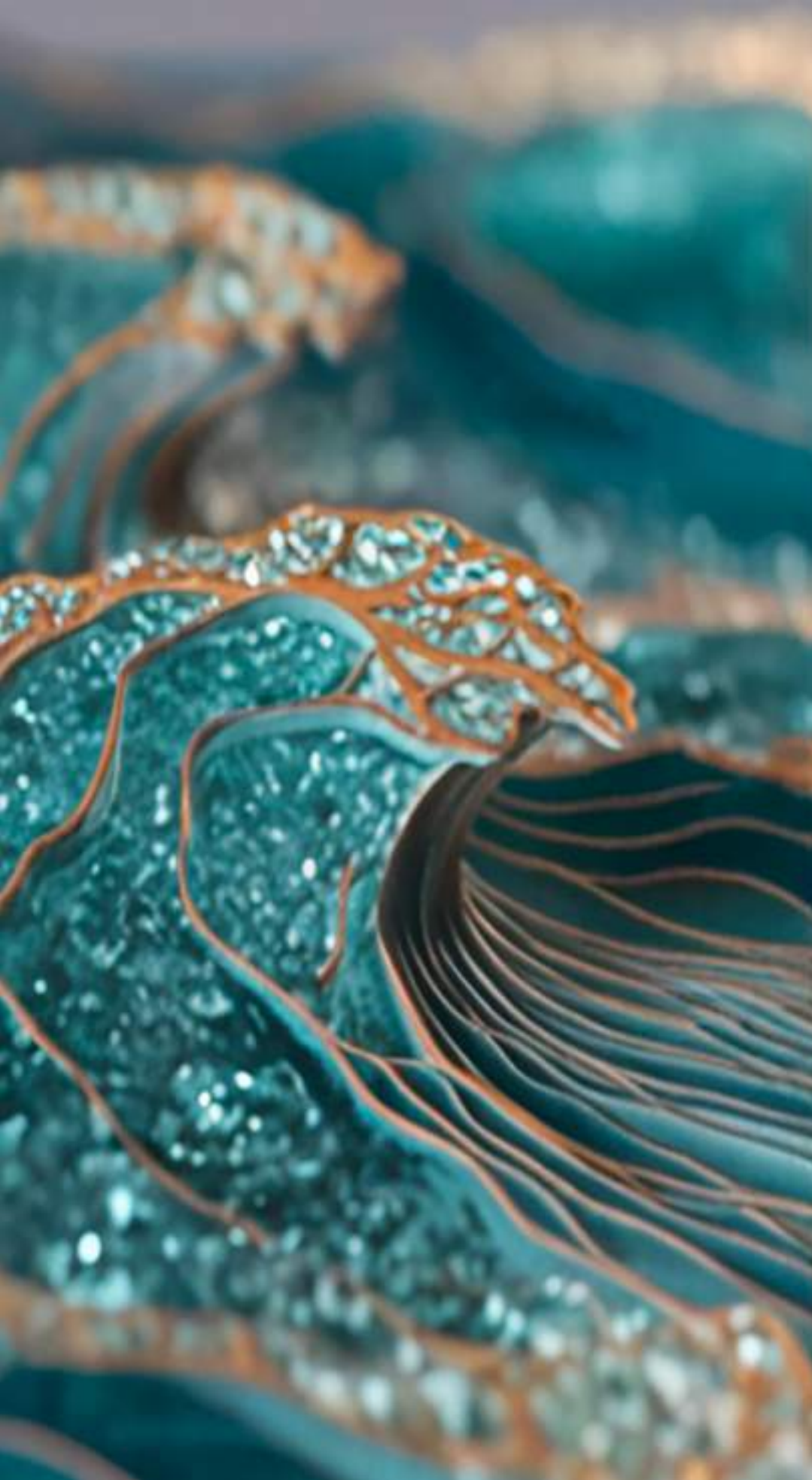
Mindful
Movement

The above is subject to disclaimer contained in this brochure.



The above is subject to disclaimer contained in this brochure.

Inspired
Living



The Art of
Strength & Serenity



The above is subject to disclaimer contained in this brochure.

Vistal
One-Bedroom Units



The above is subject to disclaimer contained in this brochure.



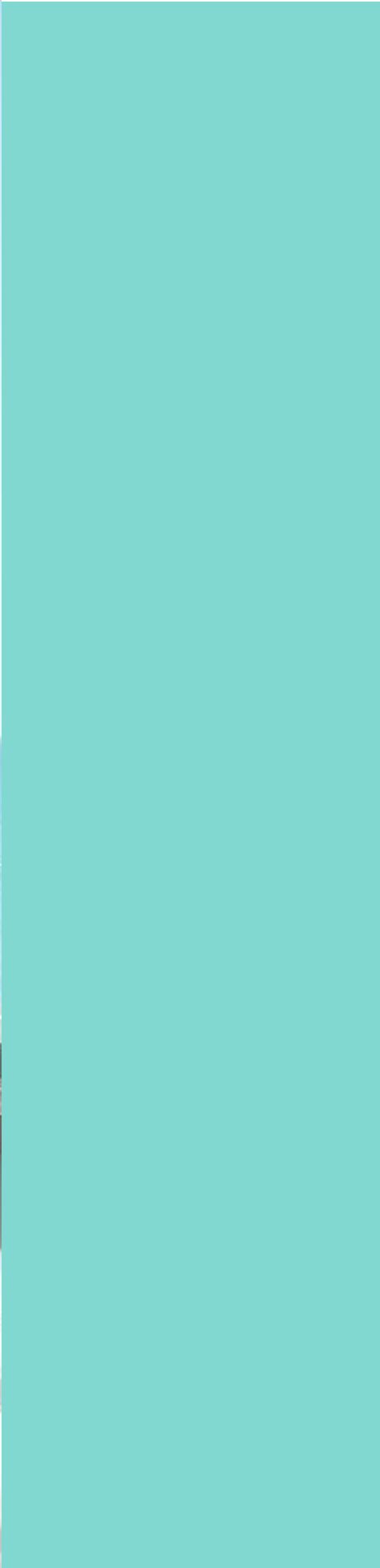
The above is subject to disclaimer contained in this brochure.



Disclaimer.
All images, plans and renders are for illustration only and may change without notice; the developer reserves the right to amend designs, finishes or layouts as required by authorities or project needs.



Disclaimer.
All images, plans and renders are for illustration only and may change without notice; the developer reserves the right to amend designs, finishes or layouts as required by authorities or project needs.



Vistal
Two-Bedroom Units



Disclaimer.
All images, plans and renders are for illustration only and may change without notice; the developer reserves the right to amend designs, finishes or layouts as required by authorities or project needs.



Disclaimer.
All images, plans and renders are for illustration only and may change without notice; the developer reserves the right to amend designs, finishes or layouts as required by authorities or project needs.



Disclaimer.
All images, plans and renders are for illustration only and may change without notice; the developer reserves the right to amend designs, finishes or layouts as required by authorities or project needs.





Disclaimer.
All images, plans and renders are for illustration only and may change without notice; the developer reserves the right to amend designs, finishes or layouts as required by authorities or project needs.

Vistal *Beach-Chalet Units*



Disclaimer.
All images, plans and renders are for illustration only and may change without notice; the developer reserves the right to amend designs, finishes or layouts as required by authorities or project needs.



Disclaimer.
All images, plans and renders are for illustration only and may change without notice; the developer reserves the right to amend designs, finishes or layouts as required by authorities or project needs.

Vistal
Ocean-Duplex Units



The above is subject to disclaimer contained in this brochure.



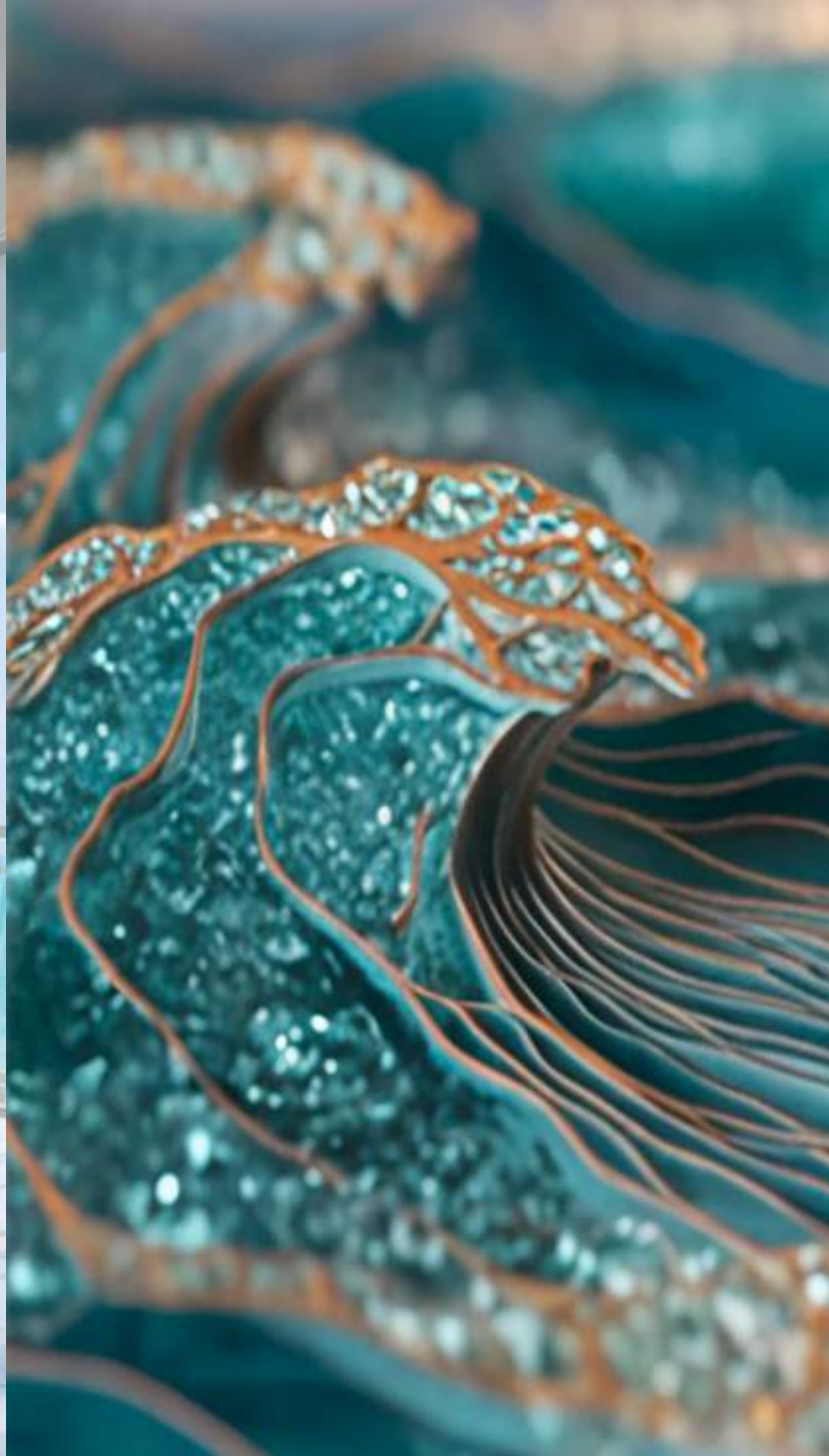
The above is subject to disclaimer contained in this brochure.



The above is subject to disclaimer contained in this brochure.



The above is subject to disclaimer contained in this brochure.



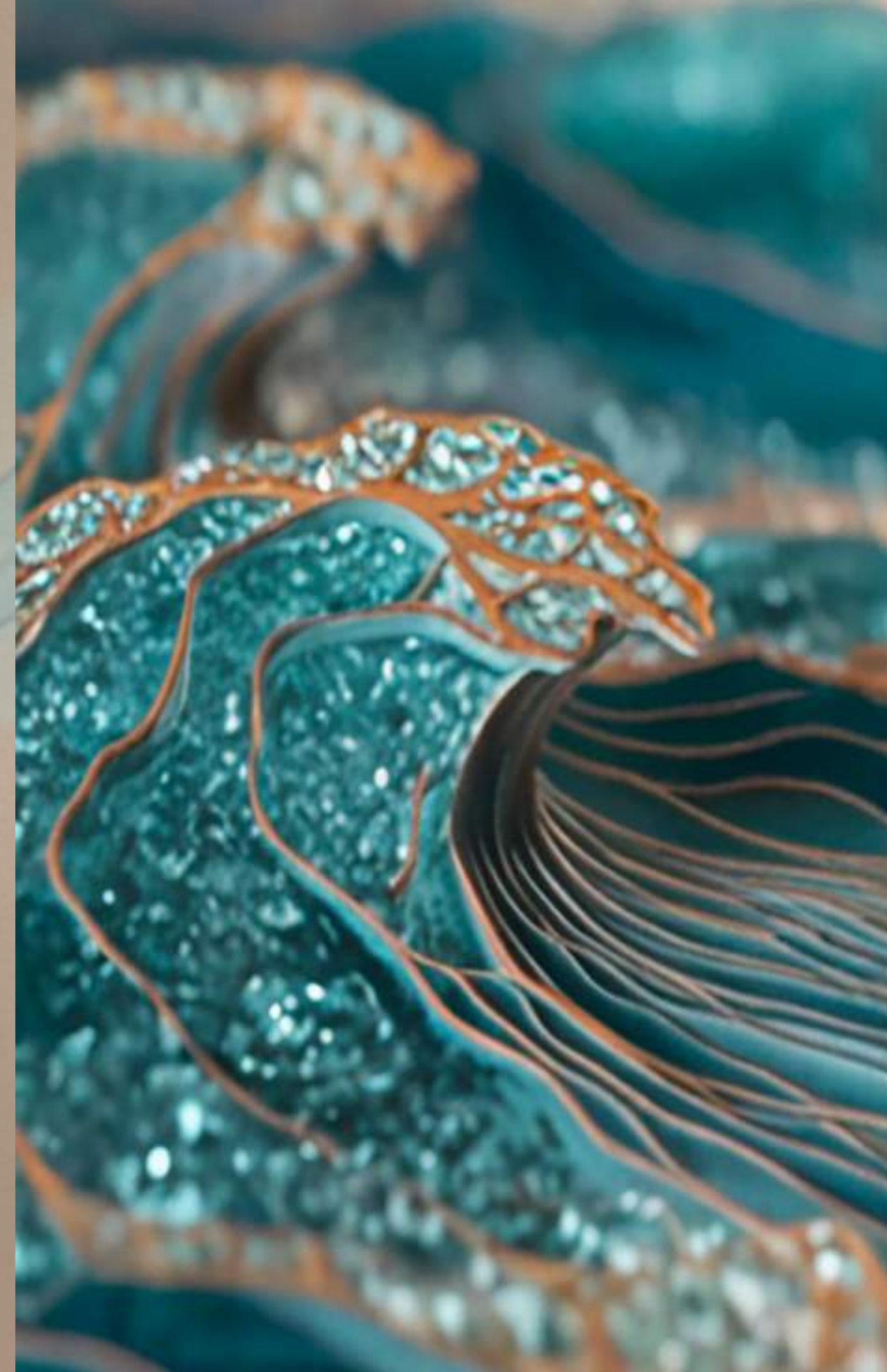
The above is subject to disclaimer contained in this brochure.

*Light Tones, Natural Textures
& Soft Finishes*

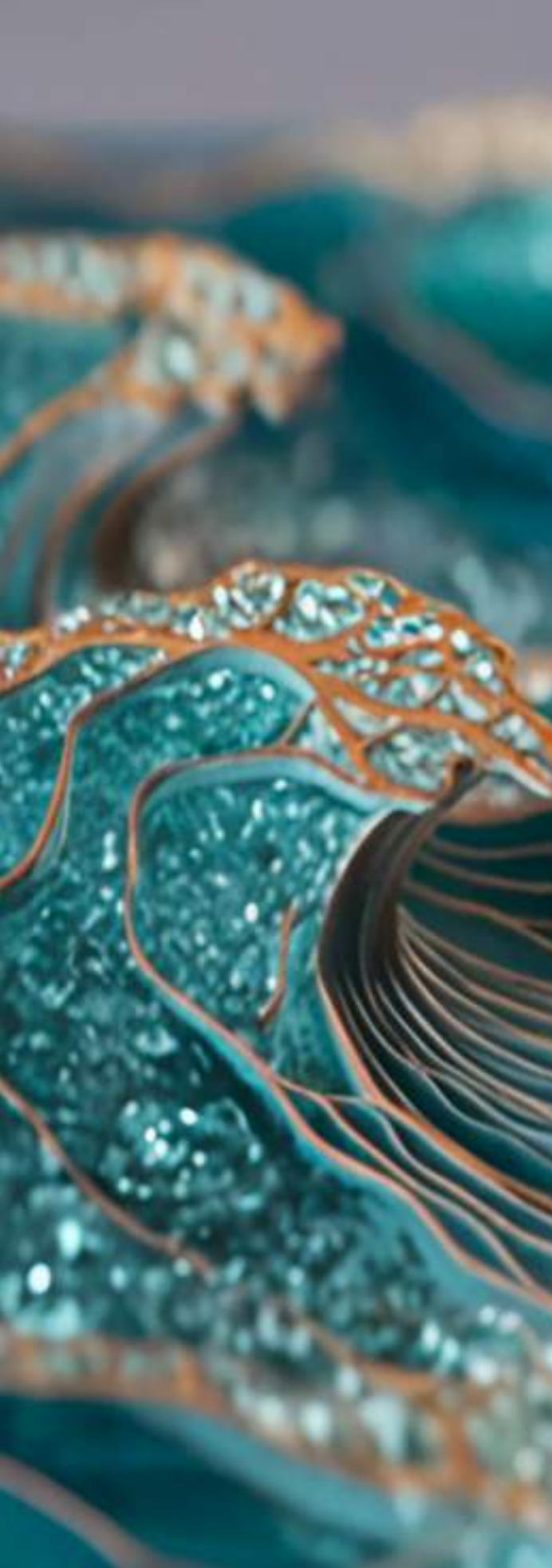


The above is subject to disclaimer contained in this brochure.

Vistal
Sky-Villa Units



The above is subject to disclaimer contained in this brochure.

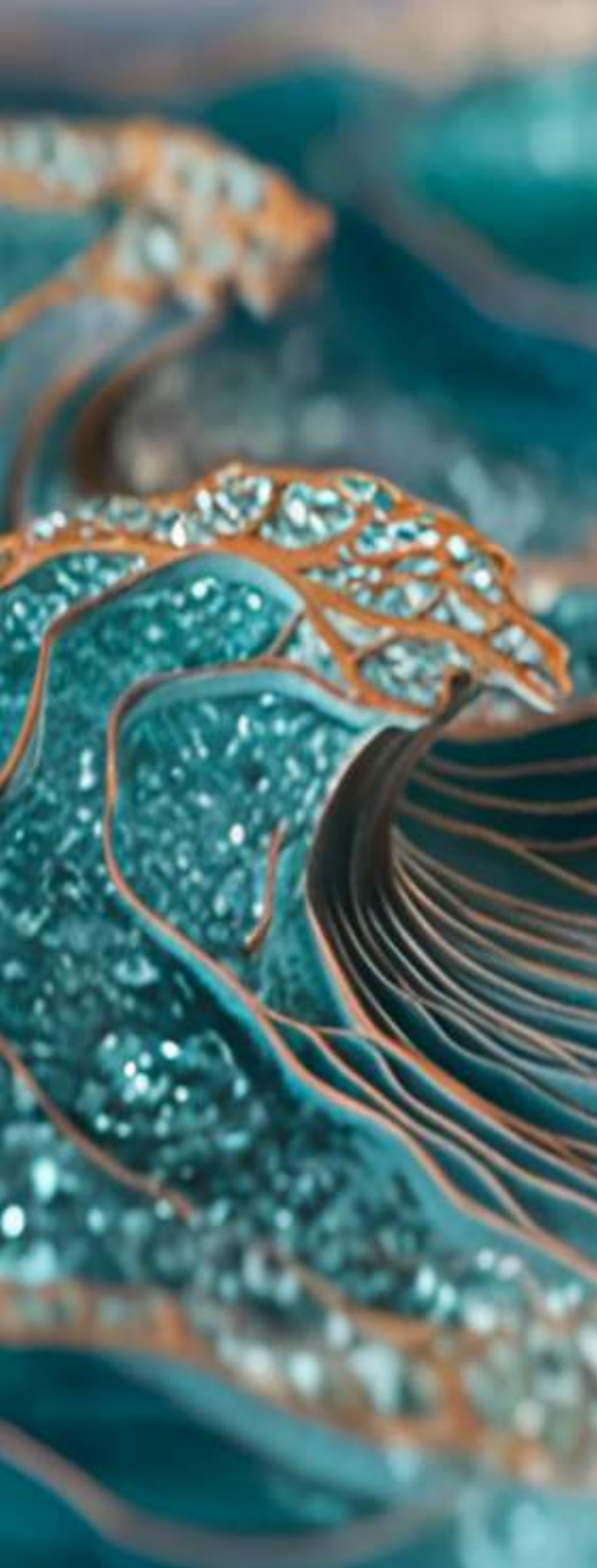


The above is subject to the disclaimer contained in the brochure.

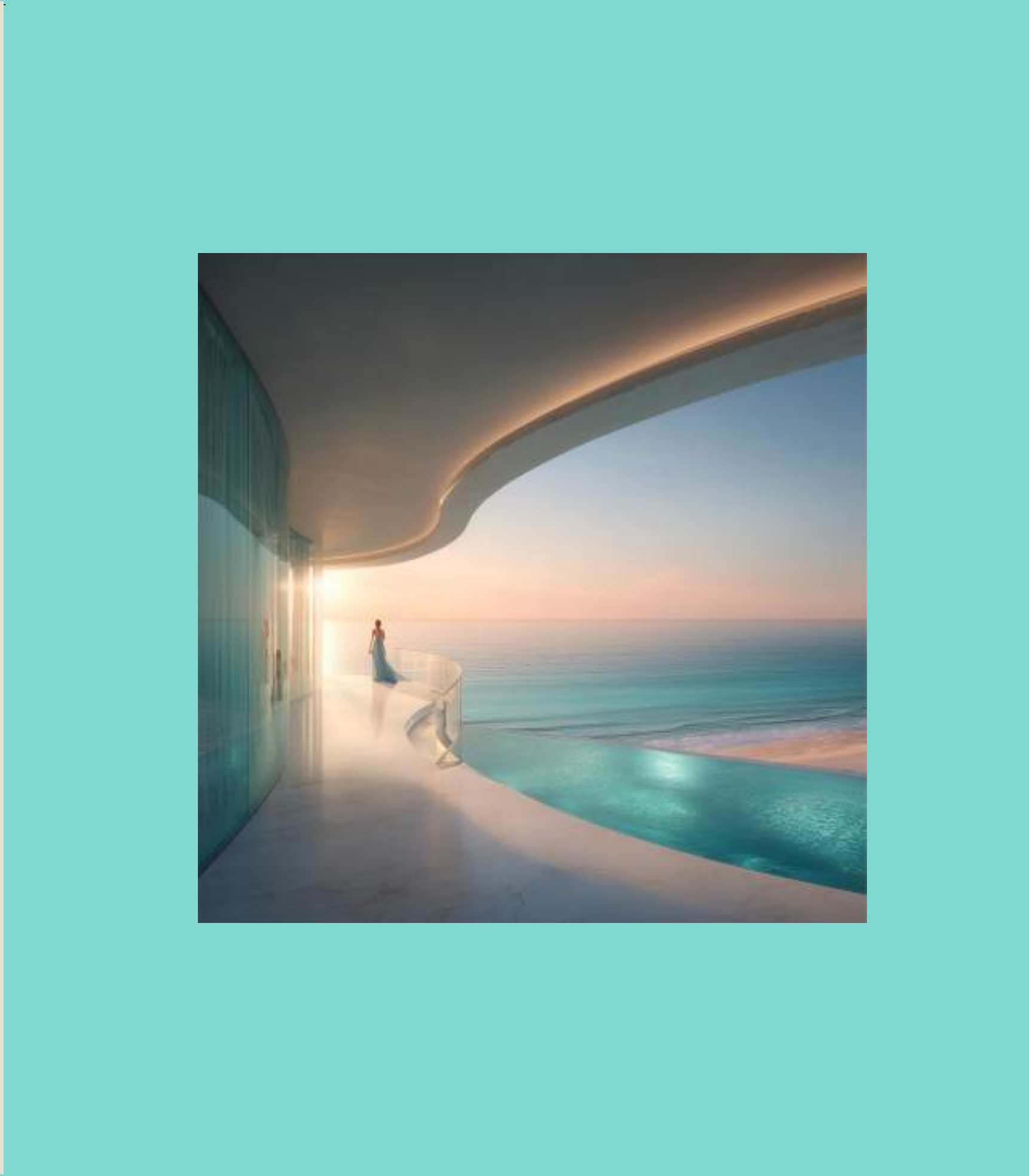
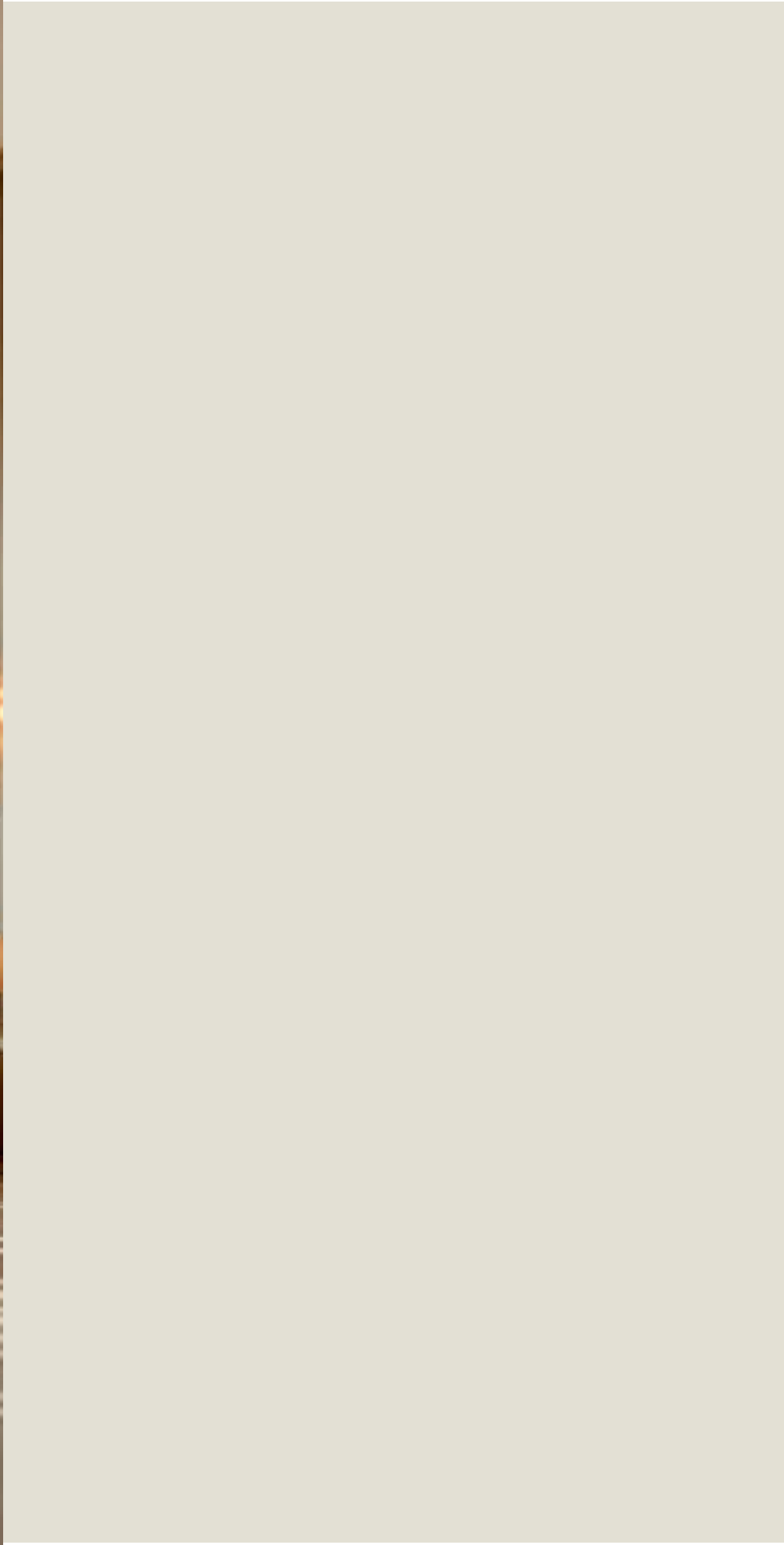


The above is subject to the disclaimer contained in the brochure.





The above is subject to disclaimer contained in this brochure.



The above is subject to disclaimer contained in this brochure.



The above is subject to disclaimer contained in this brochure.

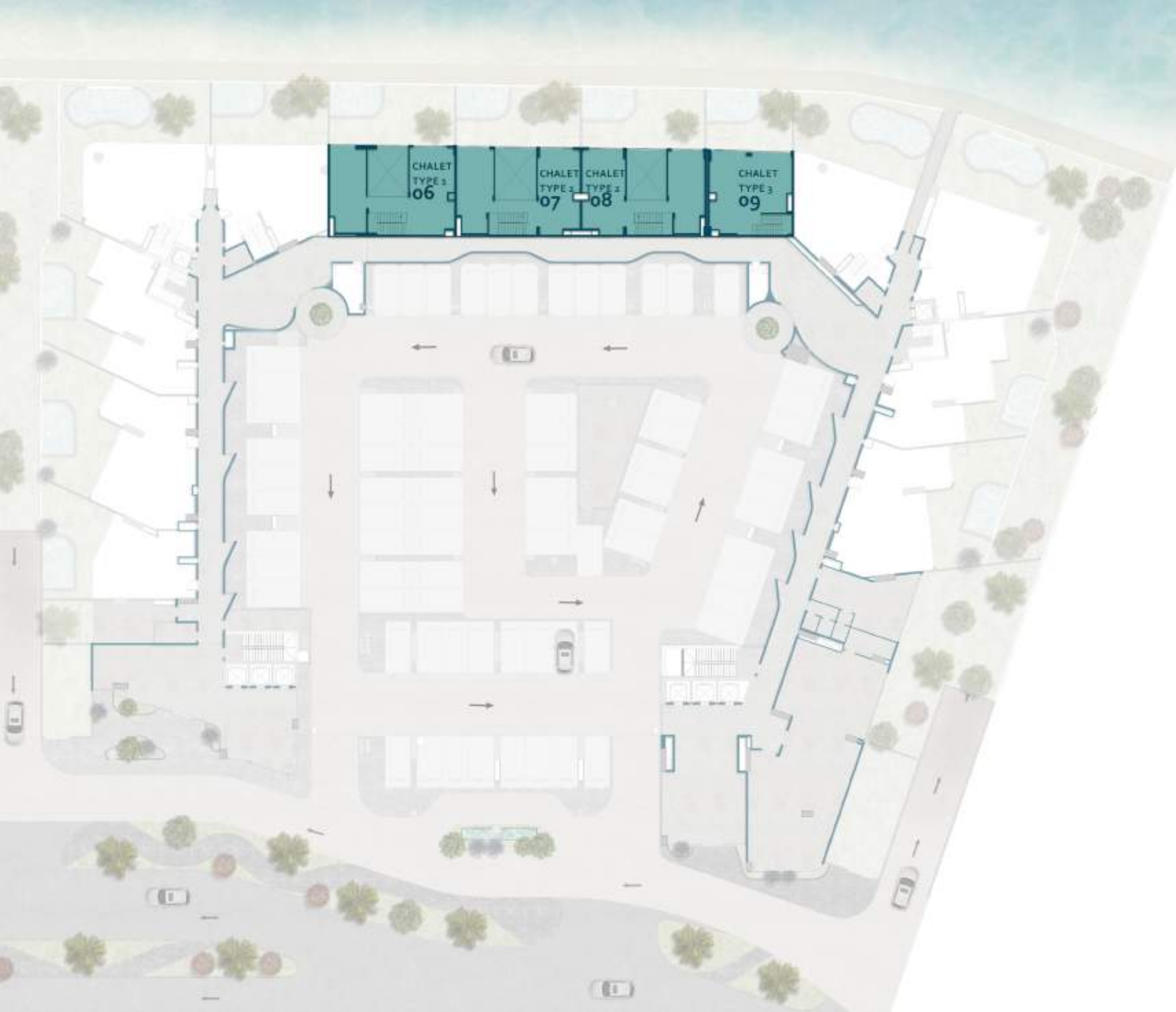


The above is subject to disclaimer contained in this brochure.

Floor Plans



The above is subject to the disclaimer contained in the brochure.



1ST FLOOR

VISTAL BEACH CHALET

The above is subject to the disclaimer contained in the brochure.



2ND FLOOR

VISTAL TWO BEDROOM
 VISTAL ONE BEDROOM
 VISTAL OCEAN DUPLEX

The above is subject to the disclaimer contained in the brochure.



3RD FLOOR

- VISTAL TWO BEDROOM
- VISTAL ONE BEDROOM
- VISTAL OCEAN DUPLEX

The above is subject to the disclaimer contained in the brochure.



4TH FLOOR

- VISTAL TWO BEDROOM
- VISTAL ONE BEDROOM
- VISTAL OCEAN DUPLEX

The above is subject to the disclaimer contained in the brochure.



5TH FLOOR

- VISTAL TWO BEDROOM
- VISTAL ONE BEDROOM
- VISTAL OCEAN DUPLEX

The above is subject to the disclaimer contained in the brochure.



6TH FLOOR

- VISTAL TWO BEDROOM
- VISTAL ONE BEDROOM
- VISTAL OCEAN DUPLEX

The above is subject to the disclaimer contained in the brochure.



7TH FLOOR

- VISTAL TWO BEDROOM
- VISTAL ONE BEDROOM
- VISTAL OCEAN DUPLEX

The above is subject to the disclaimer contained in the brochure.



8TH FLOOR

- VISTAL TWO BEDROOM
- VISTAL ONE BEDROOM
- VISTAL OCEAN DUPLEX

The above is subject to the disclaimer contained in the brochure.



PENTHOUSE

- VISTAL TWO BEDROOM
- VISTAL ONE BEDROOM
- VISTAL SKY VILLA

The above is subject to the disclaimer contained in the brochure.



ROOF

- VISTAL SKY VILLA

The above is subject to the disclaimer contained in the brochure.

Unit Plans

One-Bedroom Types

Disclaimer.
All images, plans and renders are for illustration only and may change without notice; the developer reserves the right to amend designs, finishes or layouts as required by authorities or project needs.



VISTAL ONE BEDROOM

TYPE 1

2ND-PH FLOOR

- Bedroom
- Living Area
- Dining Area
- Kitchen
- Bathroom
- Toilet
- Terrace
- Laundry

Internal Living Area: 68.82 sqm

Outdoor Living Area: 8 sqm

Total Area: 76.82 sqm



The above is subject to the disclaimer contained in the brochure.

VISTAL ONE BEDROOM TYPE 2 2ND-PH FLOOR

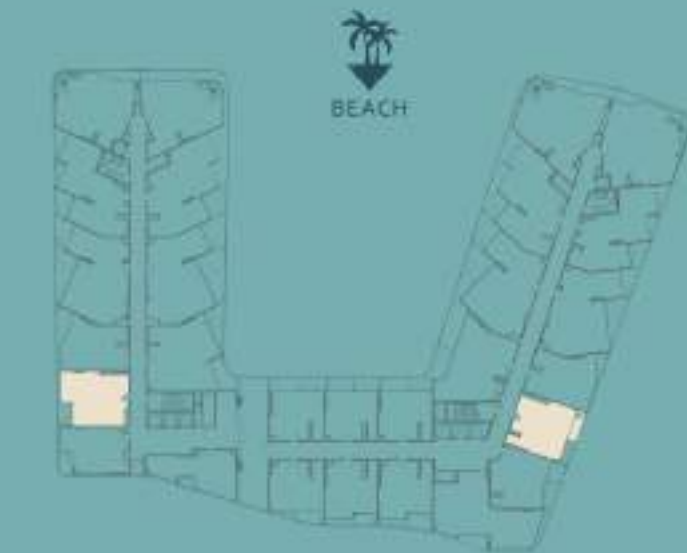


- Bedroom
- Living Area
- Dining Area
- Kitchen
- Bathroom
- Toilet
- Terrace
- Laundry

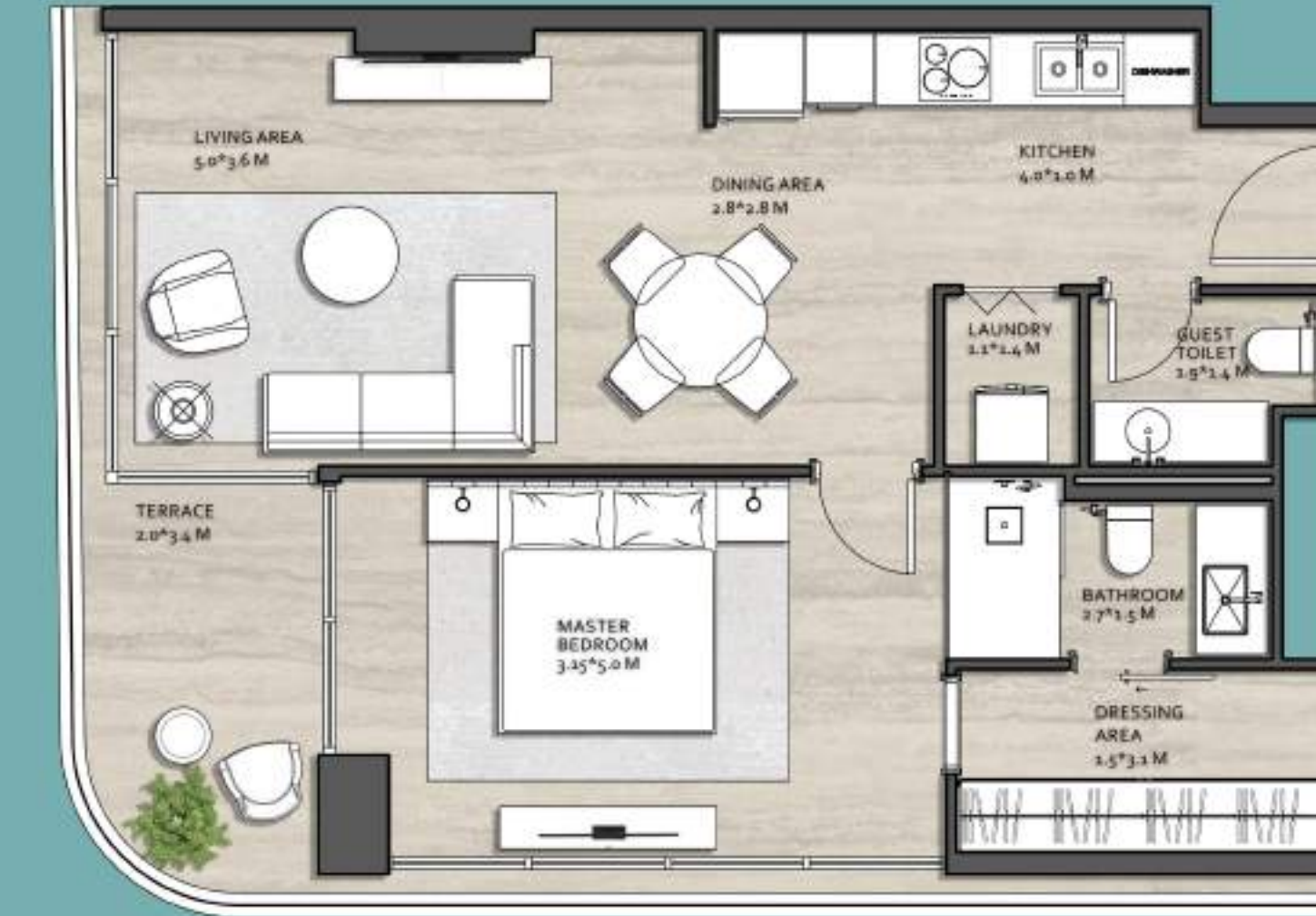
Internal Living Area: 75.56 sqm

Outdoor Living Area: 7.35 sqm

Total Area: 82.91 sqm



VISTAL ONE BEDROOM TYPE 3 2ND-PH FLOOR



- Bedroom
- Living Area
- Dining Area
- Kitchen
- Bathroom
- Toilet
- Terrace
- Laundry

Internal Living Area: 64.82 sqm

Outdoor Living Area: 6.76 sqm

Total Area: 71.58 sqm



VISTAL ONE BEDROOM

TYPE 4

2ND-PH FLOOR



- Bedroom
- Living Area
- Dining Area
- Kitchen
- Bathroom
- Toilet
- Terrace
- Laundry

Internal Living Area: **66.87 sqm**

Outdoor Living Area: **3.32 sqm**

Total Area: **70.19 sqm**



The above is subject to the disclaimer contained in the brochure.

VISTAL ONE BEDROOM

TYPE 5

2ND-PH FLOOR



- Bedroom
- Living Area
- Dining Area
- Kitchen
- Bathroom
- Toilet
- Terrace
- Laundry

Internal Living Area: **58.05 sqm**

Outdoor Living Area: **8.40 sqm**

Total Area: **66.45 sqm**



The above is subject to the disclaimer contained in the brochure.

VISTAL ONE BEDROOM TYPE 6 2ND-PH FLOOR



- Bedroom
- Living Area
- Dining Area
- Kitchen
- Bathroom
- Toilet
- Terrace
- Laundry

Internal Living Area: 70.31 sqm

Outdoor Living Area: 6.10 sqm

Total Area: 76.41 sqm



VISTAL ONE BEDROOM TYPE 7 2ND-PH FLOOR

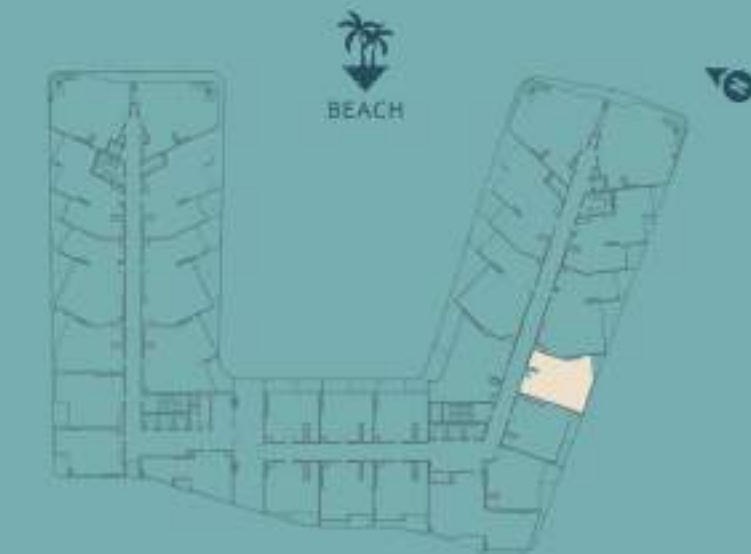


- Bedroom
- Living Area
- Dining Area
- Kitchen
- Bathroom
- Toilet
- Terrace
- Laundry

Internal Living Area: 72.14 sqm

Outdoor Living Area: 4.50 sqm

Total Area: 76.64 sqm



VISTAL ONE BEDROOM TYPE 8 GR FLOOR



- Bedroom
- Living Area
- Dining Area
- Kitchen
- Bathroom
- Toilet
- Laundry
- Garden

Internal Living Area: **68.95 sqm**

Outdoor Living Area: **59.12 sqm**

Total Area: **128.07 sqm**



VISTAL ONE BEDROOM TYPE 9 5TH-6TH FLOOR



- Bedroom
- Living Area
- Dining Area
- Kitchen
- Bathroom
- Toilet
- Terrace
- Laundry

Internal Living Area: **57.39 sqm**

Outdoor Living Area: **13.26 sqm**

Total Area: **70.65 sqm**



Unit Plans

Two-Bedroom Types



VISTAL TWO BEDROOM

TYPE 1

2ND-8TH FLOOR

- 2 Bedrooms
- Living Area
- Dining Area
- Kitchen
- 2 Bathrooms
- Toilet
- Laundry
- Terrace

Internal Living Area: **103.84** sqm

Outdoor Living Area: **4.92** sqm

Total Area: **108.76** sqm





VISTAL TWO BEDROOM TYPE 2

2ND-8TH FLOOR

- 2 Bedrooms
- Living Area
- Dining Area
- Kitchen
- 2 Bathrooms
- Toilet
- Laundry
- Terrace

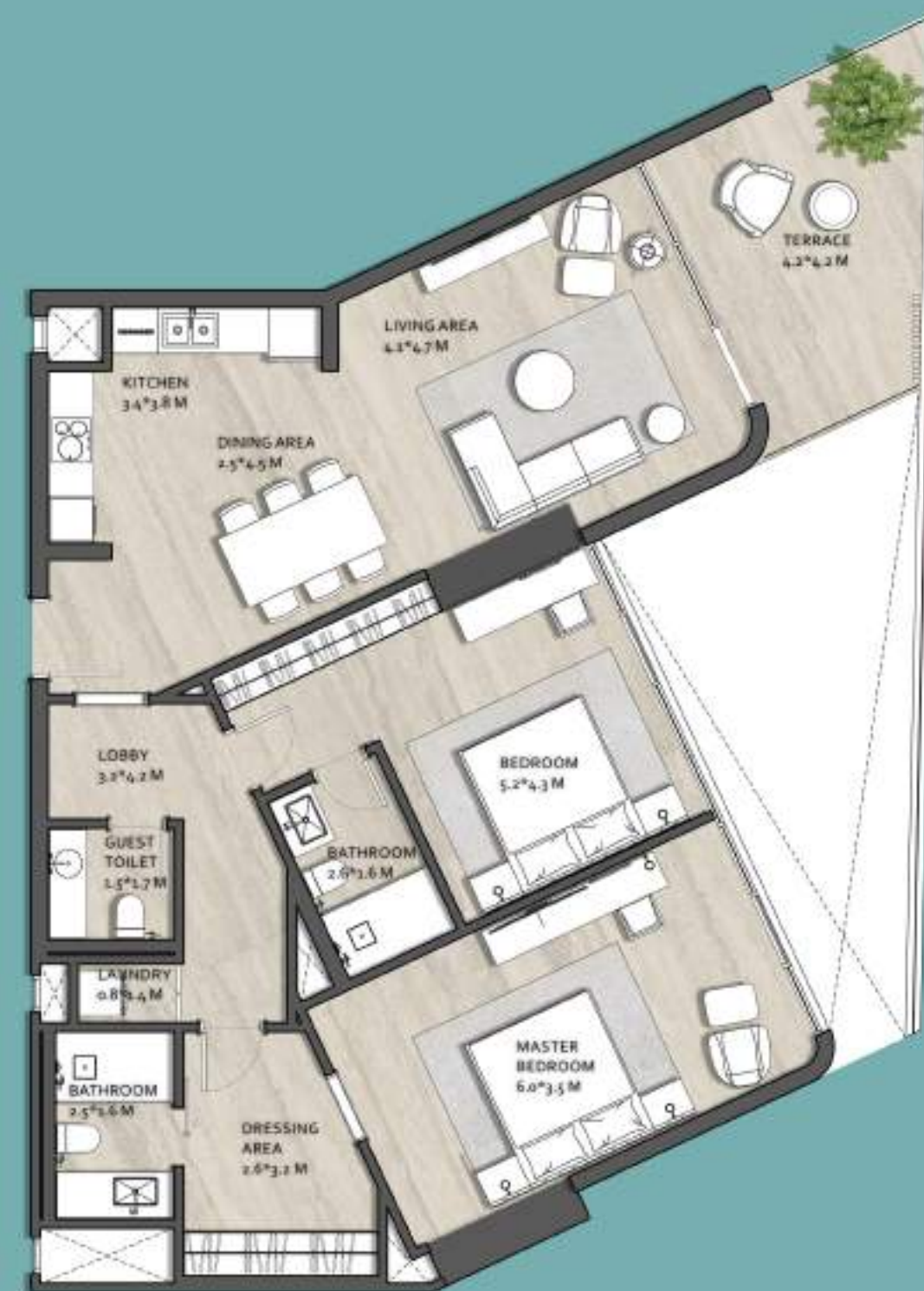
Internal Living Area: **114.19 sqm**

Outdoor Living Area: **9.26 sqm**

Total Area: **123.45 sqm**



The above is subject to the disclaimer contained in the brochure.



VISTAL TWO BEDROOM TYPE 3

2ND-PH FLOOR

- 2 Bedrooms
- Living Area
- Dining Area
- Kitchen
- 2 Bathrooms
- Toilet
- Laundry
- Terrace

Internal Living Area: **114.19 sqm**

Outdoor Living Area: **6.17 sqm**

Total Area: **120.36 sqm**



The above is subject to the disclaimer contained in the brochure.

VISTAL TWO BEDROOM TYPE 4 2ND-PH FLOOR



- 2 Bedrooms
- Living Area
- Dining Area
- Kitchen
- 2 Bathrooms
- Toilet
- Laundry
- Terrace

Internal Living Area: **103.15 sqm**

Outdoor Living Area: **8.61 sqm**

Total Area: **111.76 sqm**



VISTAL TWO BEDROOM TYPE 5 3RD-PH FLOOR



- 2 Bedrooms
- Living Area
- Dining Area
- Kitchen
- 2 Bathrooms
- Toilet
- Laundry
- Terrace

Internal Living Area: **118.46 sqm**

Outdoor Living Area: **5.91 sqm**

Total Area: **124.37 sqm**



VISTAL TWO BEDROOM TYPE 6

2ND-PH FLOOR

-  2 Bedrooms
-  Living Area
-  Dining Area
-  Kitchen
-  2 Bathrooms
-  Toilet
-  Laundry
-  Terrace

Internal Living Area: **102.37 sqm**

Outdoor Living Area: **13.81 sqm**

Total Area: **116.18 sqm**



VISTAL TWO BEDROOM TYPE 7

5TH-6TH FLOOR

-  2 Bedrooms
-  Living Area
-  Dining Area
-  Kitchen
-  2 Bathrooms
-  Toilet
-  Laundry
-  Terrace

Internal Living Area: **100 sqm**

Outdoor Living Area: **3.30 sqm**

Total Area: **103.3 sqm**





VISTAL TWO BEDROOM TYPE 8

2ND FLOOR

- 2 Bedrooms
- Living Area
- Dining Area
- Kitchen
- 2 Bathrooms
- Toilet
- Laundry
- Terrace
- Garden

Internal Living Area: **114.19**sqm

Outdoor Living Area: **61.39** sqm

Total Area: **175.58** sqm



VISTAL TWO BEDROOM TYPE 9

2ND FLOOR

- 2 Bedrooms
- Living Area
- Dining Area
- Kitchen
- 2 Bathrooms
- Toilet
- Laundry
- Garden

Internal Living Area: **115.57** sqm

Outdoor Living Area: **70.45** sqm

Total Area: **186.02** sqm





VISTAL TWO BEDROOM TYPE 10

2ND FLOOR

- 2 Bedrooms
- Living Area
- Dining Area
- Kitchen
- 2 Bathrooms
- Toilet
- Laundry
- Garden

Internal Living Area: **103.15 sqm**

Outdoor Living Area: **68.46 sqm**

Total Area: **171.61 sqm**



VISTAL TWO BEDROOM TYPE 11

2ND FLOOR

- 2 Bedrooms
- Living Area
- Dining Area
- Kitchen
- 2 Bathrooms
- Toilet
- Laundry
- Garden

Internal Living Area: **102.37 sqm**

Outdoor Living Area: **65.03 sqm**

Total Area: **167.4 sqm**





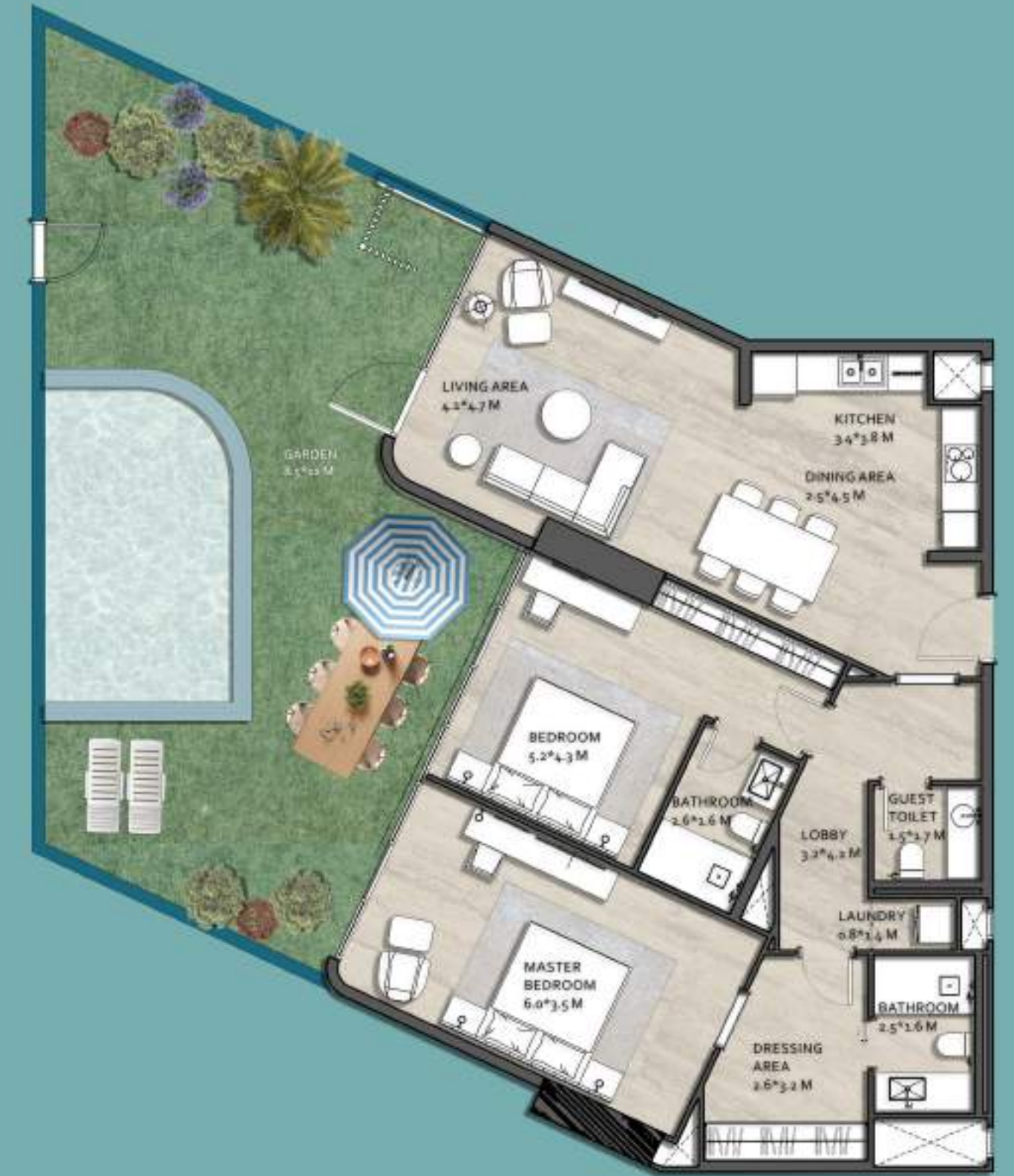
VISTAL TWO BEDROOM
TYPE 12
GR FLOOR

- 2 Bedrooms
- Living Area
- Dining Area
- Kitchen
- 2 Bathrooms
- Toilet
- Laundry
- Garden

Internal Living Area: **103.84 sqm**

Outdoor Living Area: **67.81 sqm**

Total Area: **171.65 sqm**



VISTAL TWO BEDROOM
TYPE 13
GR FLOOR

- 2 Bedrooms
- Living Area
- Dining Area
- Kitchen
- 2 Bathrooms
- Toilet
- Laundry
- Garden

Internal Living Area: **115.57 sqm**

Outdoor Living Area: **81.89 sqm**

Total Area: **197.46 sqm**



VISTAL TWO BEDROOM

TYPE 14

2ND FLOOR



- 2 Bedrooms
- Living Area
- Dining Area
- Kitchen
- 2 Bathrooms
- Toilet
- Laundry
- Terrace

Internal Living Area: **110.03 sqm**

Outdoor Living Area: **5.91 sqm**

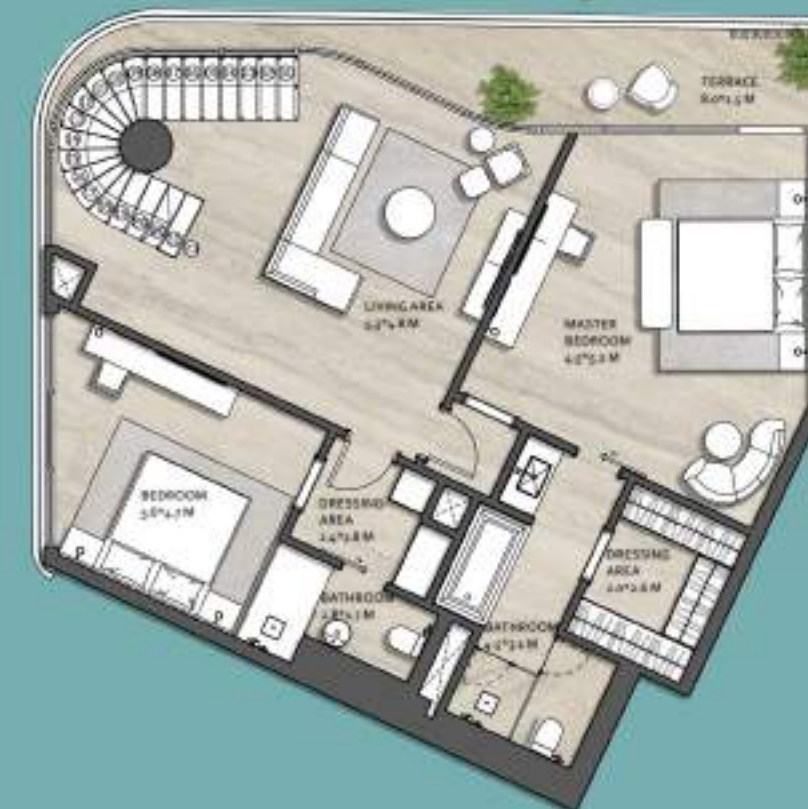
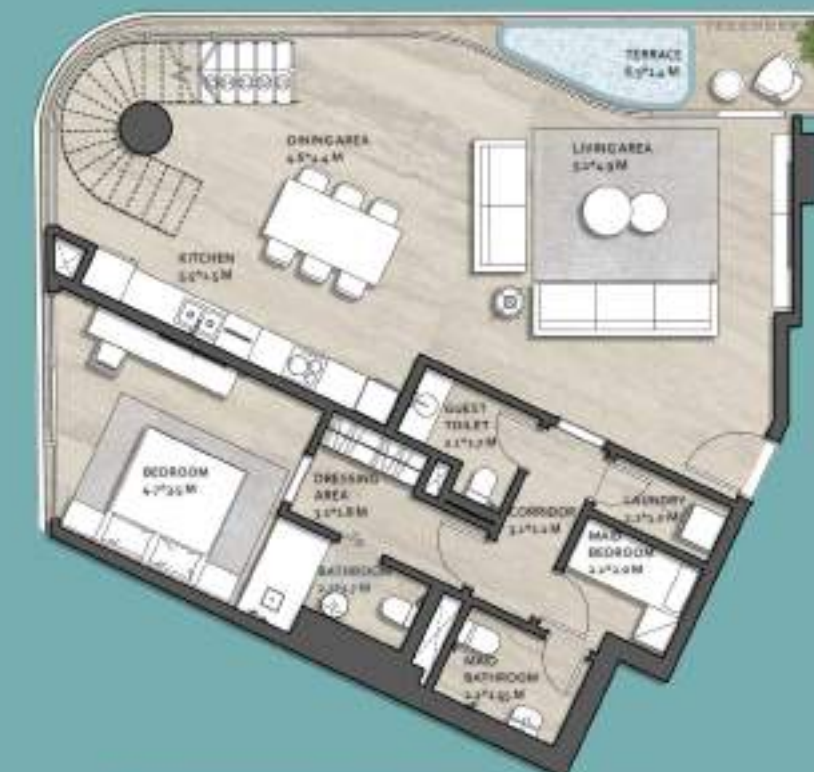
Total Area: **115.94 sqm**



Attention to Detail,
Even in the Finest Places.

Unit Plans

Vistal-Ocean Duplex



VISTAL OCEAN DUPLEX

TYPE 1

3RD-8TH FLOOR

-  3 Bedrooms
-  2 Living Areas
-  Dining Area
-  Kitchen
-  4 Bathrooms
-  Toilet
-  2 Terraces
-  Maid's room
-  Laundry

Internal Living Area: **212.29** sqm

Outdoor Living Area: **20.37** sqm

Total Area: **232.66** sqm





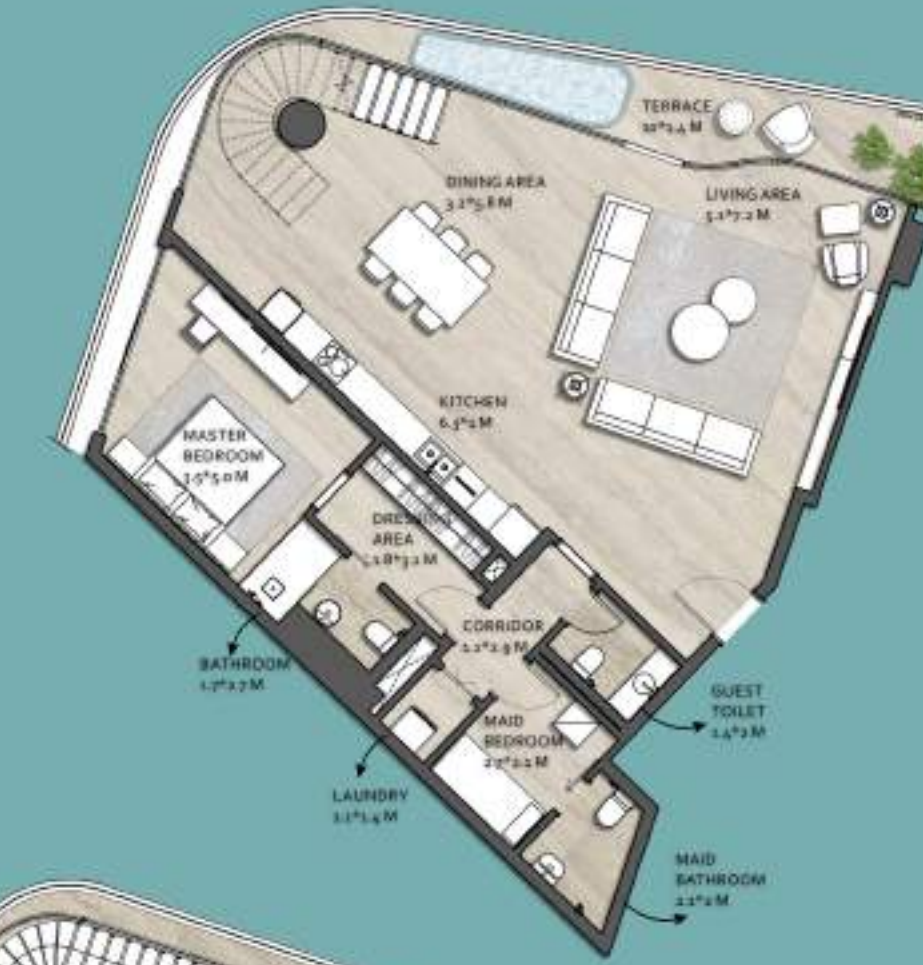
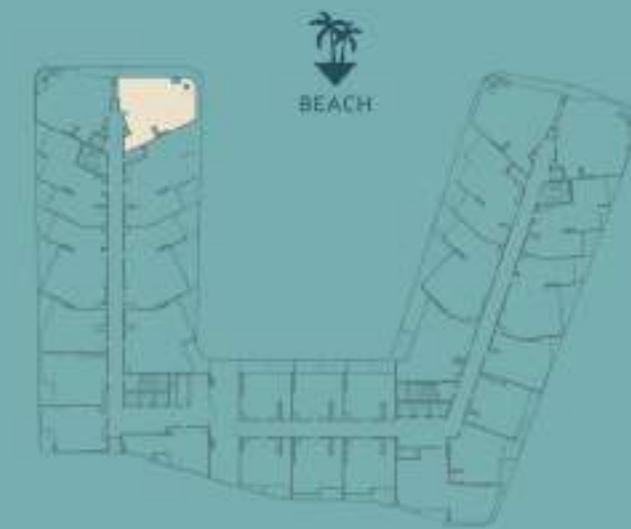
VISTAL OCEAN DUPLEX TYPE 2 3RD-8TH FLOOR

- 3 Bedrooms
- 2 Living Areas
- Dining Area
- Kitchen
- 4 Bathrooms
- Toilet
- 2 Terraces
- Maid's room
- Laundry

Internal Living Area: **209.92** sqm

Outdoor Living Area: **35.88** sqm

Total Area: **245.8** sqm



VISTAL OCEAN DUPLEX TYPE 3 3RD-8TH FLOOR

- 3 Bedrooms
- 2 Living Areas
- Dining Area
- Kitchen
- 4 Bathrooms
- Toilet
- 2 Terraces
- Maid's room
- Laundry

Internal Living Area: **249.07** sqm

Outdoor Living Area: **24.33** sqm

Total Area: **273.4** sqm





VISTAL OCEAN DUPLEX TYPE 4

3RD-8TH FLOOR

- 4 Bedrooms
- 2 Living Areas
- Dining Area
- Kitchen
- 4 Bathrooms
- Toilet
- 2 Terraces
- Maid's room
- Laundry

Internal Living Area: **258.87 sqm**

Outdoor Living Area: **23.13 sqm**

Total Area: **282 sqm**



VISTAL OCEAN DUPLEX TYPE 5

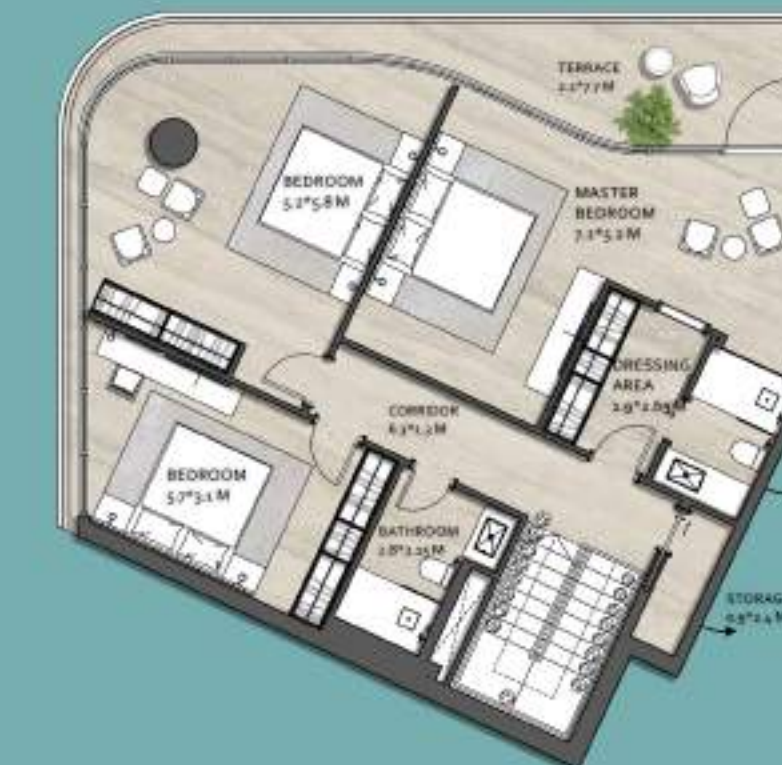
GR-2ND FLOOR

- 3 Bedrooms
- Living Area
- Dining Area
- Kitchen
- 2 Bathrooms
- Toilet
- 2 Storages
- Laundry
- Terrace
- Garden

Internal Living Area: **216.66 sqm**

Outdoor Living Area: **118.40 sqm**

Total Area: **335.06 sqm**





VISTAL OCEAN DUPLEX TYPE 6 GR-2ND FLOOR

- 3 Bedrooms
- Living Area
- Dining Area
- Kitchen
- 2 Bathrooms
- Toilet
- 2 Storages
- Laundry
- Terrace
- Garden

Internal Living Area: **191.73** sqm

Outdoor Living Area: **129.81** sqm

Total Area: **321.54** sqm



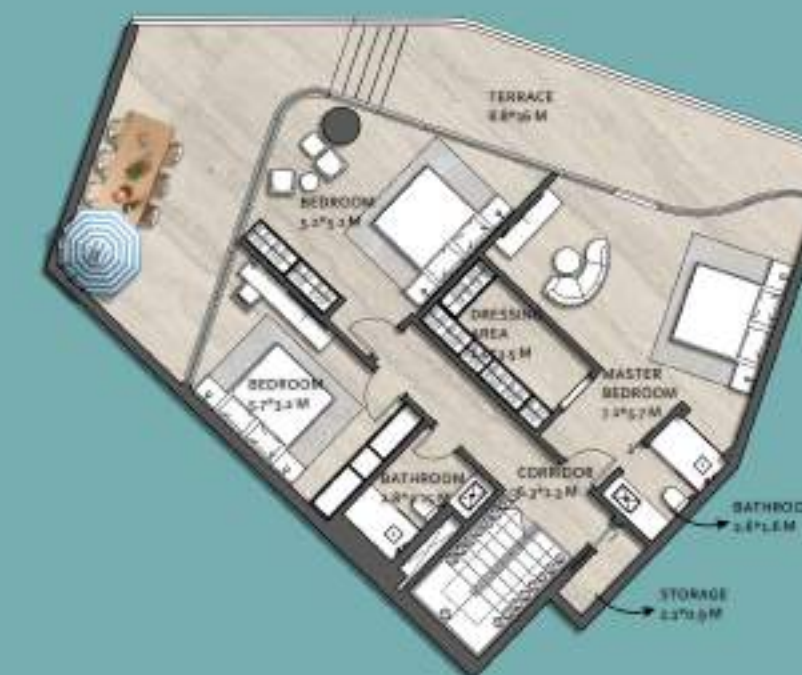
VISTAL OCEAN DUPLEX TYPE 7 GR-2ND FLOOR

- 3 Bedrooms
- Living Area
- Dining Area
- Kitchen
- 2 Bathrooms
- Toilet
- 2 Storages
- Laundry
- Terrace
- Garden

Internal Living Area: **225.26** sqm

Outdoor Living Area: **117.22** sqm

Total Area: **342.48** sqm



VISTAL OCEAN DUPLEX

TYPE 8

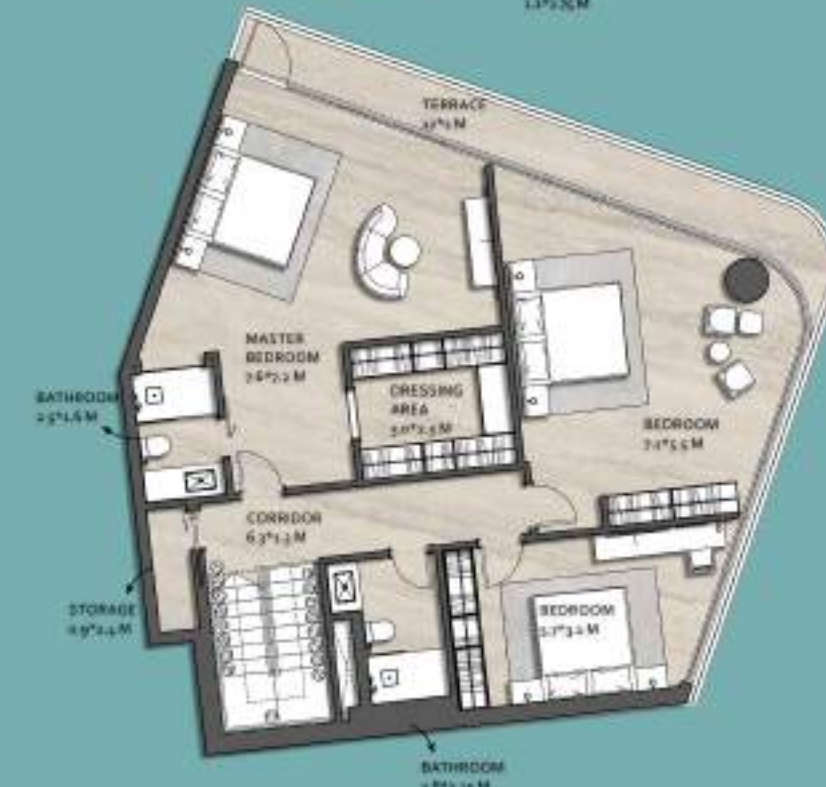
GR-2ND FLOOR

- 3 Bedrooms
- Living Area
- Dining Area
- Kitchen
- 2 Bathrooms
- Toilet
- 2 Storages
- Laundry
- Terrace
- Garden

Internal Living Area: 223.71 sqm

Outdoor Living Area: 183.29 sqm

Total Area: 407 sqm



Designing Spaces That
Define Status.

Unit Plans

Vistal Beach Chalet



VISTAL BEACH CHALET

TYPE 1

GR-1ST FLOOR

- 3 Bedrooms
- Living Area
- Dining Area
- Kitchen
- 4 Bathrooms
- Toilet
- Laundry
- Maid's Room
- Garden

Internal Living Area: 188.66 sqm

Outdoor Living Area: 73.36 sqm

Total Area: 262.02 sqm



VISTAL BEACH CHALET TYPE 2 GR-1ST FLOOR

-  3 Bedrooms
-  Living Area
-  Dining Area
-  Kitchen
-  4 Bathrooms
-  Toilet
-  Laundry
-  Maid's Room
-  Garden

Internal Living Area: **178.63** sqm

Outdoor Living Area: **72.87** sqm

Total Area: **251.5** sqm



VISTAL BEACH CHALET TYPE 3 GR-1ST FLOOR

-  2 Bedrooms
-  Living Area
-  Dining Area
-  Kitchen
-  3 Bathrooms
-  Toilet
-  Laundry
-  Maid's Room
-  Garden

Internal Living Area: **129.33** sqm

Outdoor Living Area: **50.86** sqm

Total Area: **180.19** sqm



Unit Plans

Vistal Sky-Villa



VISTAL SKY VILLA

TYPE 1

PH FLOOR

- 3 Bedrooms
- Living Area
- Dining Area
- 2 Kitchens
- 4 Bathrooms
- Toilet
- Laundry
- Maid's Room
- 2 Terraces

Internal Living Area: 226 sqm

Outdoor Living Area: 270 sqm

Total Area: 496 sqm



Disclaimer.
All images, plans and renders are for illustration only and may change without notice; the developer reserves the right to amend designs, finishes or layouts as required by authorities or project needs.

The above is subject to the disclaimer contained in the brochure.



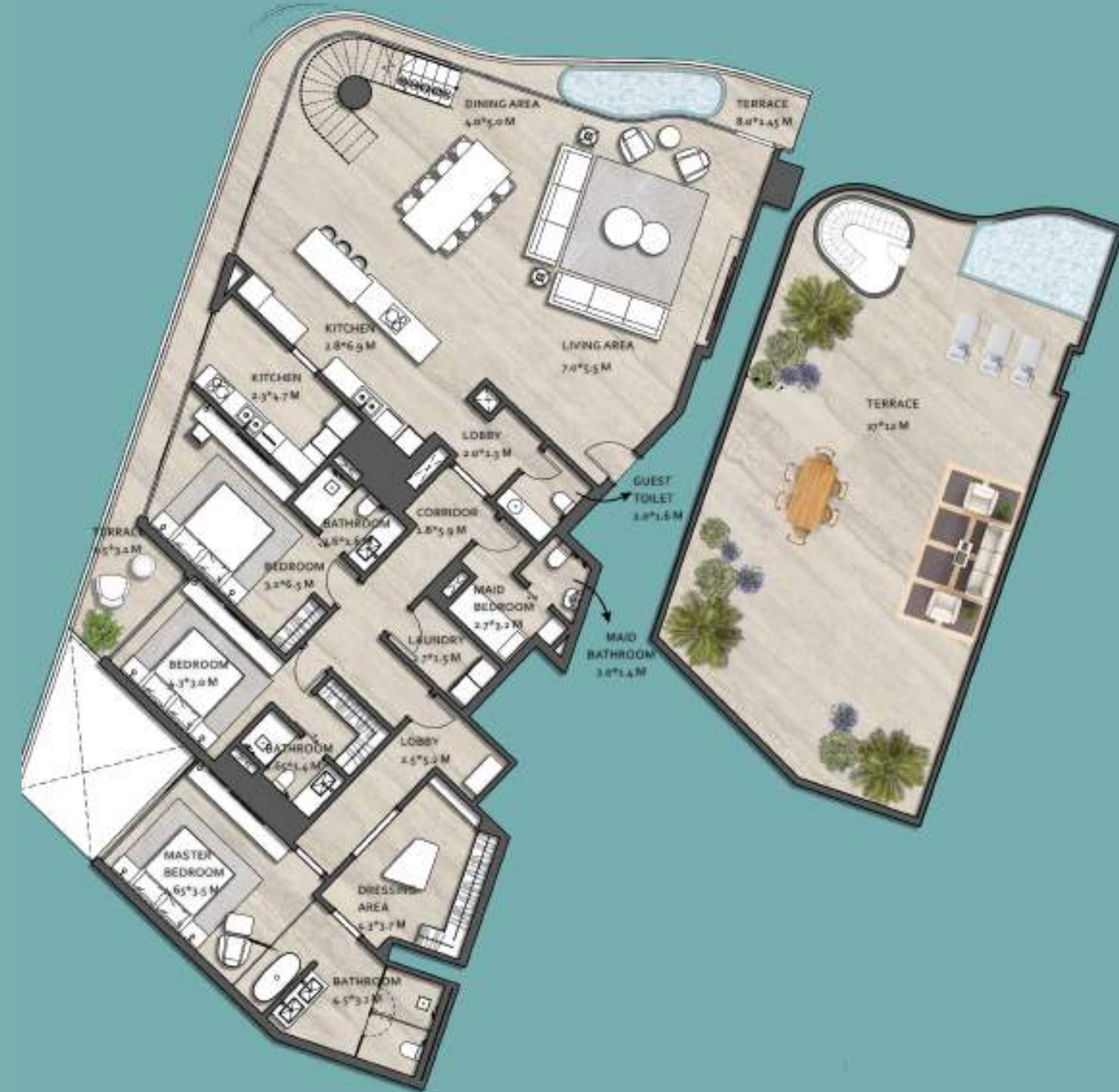
VISTAL SKY VILLA TYPE 2 PH FLOOR

-  3 Bedrooms
-  Living Area
-  Dining Area
-  2 Kitchens
-  4 Bathrooms
-  Toilet
-  Laundry
-  Maid's Room
-  2 Terraces

Internal Living Area: **240 sqm**

Outdoor Living Area: **282 sqm**

Total Area: **522 sqm**



VISTAL SKY VILLA TYPE 3 PH FLOOR

-  3 Bedrooms
-  Living Area
-  Dining Area
-  2 Kitchens
-  4 Bathrooms
-  Toilet
-  Laundry
-  Maid's Room
-  2 Terraces

Internal Living Area: **260 sqm**

Outdoor Living Area: **320 sqm**

Total Area: **580 sqm**



VISTAL SKY VILLA
TYPE 4
 PH FLOOR



-  3 Bedrooms
-  Living Area
-  Dining Area
-  2 Kitchens
-  4 Bathrooms
-  Toilet
-  Laundry
-  Maid's Room
-  3 Terraces

Internal Living Area: **253** sqm

Outdoor Living Area: **307** sqm

Total Area: **560** sqm



Homes Crafted For The Elite

